

If not **YOU** Who?  
If not **NOW** When?

## 2019 Annual Conference - October 28-30 *Saratoga Hilton Hotel*

---

Attendees will receive a Conference-At-A-Glance on site  
with a brief description for each session.

Please print this document if you want comprehensive  
information on sessions and events.

*\*Please note: Information is subject to change\**



**Get connected at this year's Conference! Please join our Conference  
Facebook group page <https://www.facebook.com/groups/463228997433662/>.**

**Check out our conference website ([conference.cpstate.org](http://conference.cpstate.org)) to get all the  
latest information about people and events at the 2019 CP of NYS Annual  
Conference.**

Also, follow us on...



## Board of Directors and Officers 2019

Chairman.....	Stephen C. Lipinski
Treasurer .....	John R. Horvath
Secretary .....	Barbara N. Scherr
Directors at Large .....	Cora Baliff Joseph P. Dutkowsky, MD David H. Eichenauer Ann B. LeMark Robert P. Masterson Brian P. McLane James E. Peace Marvin S. Reed Louis B. Tehan
Active Past Chairs .....	Thomas J. Caserta, Jr., Esq. Robert M. DiFrancesco Natalie K. Rogers Jack M. Weinstein, Esq. Idajean Windell, Ed.D.

## Executive Staff

President & CEO .....	Susan Constantino
Executive Director .....	Michael Alvaro
General Legal Counsel.....	Michael Wigotsky, Esq.

---

## CONFERENCE STAFF

Idajean Windell, Ed.D., *Conference Chair*

Susan Constantino - Mike Alvaro

Angela Anderson - Cheryl Bradway - Barbara Crosier - Bill DeVoe  
Mary Beth Durocher - Tim Ferguson - Thomas Hamel  
Cindy Morris - Al Shibley - Deb Williams

## Message from the Board Chair, President & CEO, and Conference Chair



**STEPHEN C. LIPINSKI**  
*Board Chairman*



**SUSAN CONSTANTINO**  
*President & CEO*



**IDAJEAN WINDELL, Ed.D.**  
*Conference Chair*

---

We are pleased to welcome everyone to the 2019 Cerebral Palsy Associations of New York State Annual Conference.

As you know, the only constant in human services is change. This year, CP of NYS was split into two distinct entities. What was known as Metro Services became Constructive Partnerships Unlimited (CP Unlimited), and the former Affiliate Services Office retained the CP of NYS name. Despite the significant change in corporate structure, CP of NYS remains true to our mission in partnership with and in support of our Affiliates.

At this year's Annual Conference, we're offering a full array of sessions that will challenge us to move forward in positive and exciting ways; to be better practitioners, caregivers, and advocates. In the past, we've asked you to imagine a better world for people with developmental disabilities and those who support them. Now, we're asking you to put those thoughts into action. The theme this year of "If not you, who? And if not now, when?" really drives home the point that each one of us needs to be an advocate for those in our care. And the time for advocacy is now... and always.

We are stronger together - sharing best practices and speaking as a field with one, united voice. Please take this opportunity to listen to others' perspectives and exchange ideas with your colleagues from across the state.

Remember to check the daily schedule posted on our web page ([conference.cpstate.org](http://conference.cpstate.org)) and our Conference Facebook page ([facebook.com/groups/463228997433662/](https://facebook.com/groups/463228997433662/)). Also, please tell us what you think of the sessions. We listen to your comments and take them into consideration when planning future sessions.

We hope you leave this conference reinvigorated to support individuals with developmental disabilities through our programs, our advocacy and our commitment to assisting individuals realize their potential.

Please enjoy the robust program we've prepared for you and enjoy the beautiful city of Saratoga Springs.

Thank you for joining us.

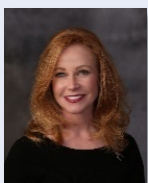
REGISTRATION ..... Opens at 7:30 a.m.

IMAGINE NY ART DISPLAY ..... Pavilion  
SPONSORED BY CEREBRAL PALSY OF LONG ISLAND

*You will want to walk through the Pavilion to view artwork created by people with disabilities representing CP of NYS Affiliates. We have again added a display of photographs created by program participants from across the state to this year's art exhibition.*

10:45 a.m. to Noon..... Saratoga 1

## KANCARE - AN UPDATE ON MANAGED CARE IN KANSAS



Brenda Maxey, President/CEO, TECH, Inc.

SPONSORED BY QUEENS CENTERS FOR PROGRESS

New York, I cautioned you in 2014 that the managed care approach to services for people with disabilities was a slippery slope to be on. Kansas is now fully emerged in a managed care system and it appears you all are joining us! This session will provide an update of the managed care system in Kansas, what works (not much) and what doesn't (most of it) for people we serve.

*[Intended Audience: Administrators/Directors, Board Members, Consumers, Family Members, Finance, Mangers, Public Relations]*

## KEYNOTE LUNCH & AWARDS CEREMONY

Noon to 2:15 p.m. .... City Center



### MONDAY KEYNOTE ADDRESS - OPWDD COMMISSIONER'S UPDATE

Honorable Theodore M. Kastner, MD, Commissioner, NYS Office for People With Developmental Disabilities

Dr. Theodore Kastner, Commissioner of the NYS Office for People With Developmental Disabilities (OPWDD), will be the featured speaker at our Keynote Luncheon. He will provide an update on OPWDD's priorities and its response to the many critical issues facing people with disabilities, their families and the organizations and people that provide the supports and services critical to their ability to actively participate in their communities.

*[Intended Audience: General]*

## LUNCHEON AWARD PROGRAM

**Norman Biegaj** (Olean Lodge #491)

*Elks Award*

**Montezir "Monty" Bhanji / Stop & Shop**

(Queens Centers for Progress)

*Employer of the Year Award*

**Otis Armstrong Day Habilitation Program**

(The Center for Discovery)

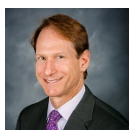
*2019 IMAGINE NY Art Contest Winner*

### KEYNOTE SPEAKER

**Honorable Theodore M. Kastner, MD**

(NYS Office for People With Developmental Disabilities)

## 2:45 p.m. to 4:00 p.m. - CONCURRENT SESSIONS



### THE EVOLVING WORLD OF HEALTH SERVICES & THE DISABILITY COMMUNITY .....Saratoga 1&2

**Daniel B. Sheppard**, *Deputy Commissioner, Office of Primary Care & Health Systems Management, NYS Department of Health*

Mr. Sheppard will provide a framework of the evolving world of New York State health care and how and where individuals with disabilities fit into it. With MRT, DSRIP, PPS, APG, VBP, MCO and the many other acronyms of the evolving Medicaid and healthcare world, Mr. Sheppard will provide his view of where we are, where we are going, and when we will know if we have arrived at the correct destination. Join Mr. Sheppard as he looks to unravel the complex world of health care and disability.

*[Intended Audience: Administrators/Directors, Board Members, Clinicians, Emerging Leaders, Finance, General]*



### WAITING TO HEAR “MOMMA” - A MOTHER’S MEMOIR..... Broadway 1 & 2

**Lucille Messina**, *Author*

**Robert McGuire**, *Executive Director, Cerebral Palsy of Long Island*

**Karen Geller-Hittleman**, *Assistant Executive Director, Cerebral Palsy of Long Island*



Join Lucille Messina, author of “Waiting to Hear ‘Momma’: A Mother's Memoir,” for this unique session on coping with the emotional rollercoaster of caring for a child with special needs. Lucille, the mother of a medically fragile child, will read passages from the book and take questions from the audience.

*[Intended Audience: Board Members, Consumers, Early Childhood Professionals, Educators, Family Members, General]*



### \$5 AND A GOOD IDEA..... Alabama/Travers

**Margaret Gould**, *President/CEO, The VISIONS Center for Creative Management*

Sometimes the solutions you are looking for are simpler than you expect. This session will engage participants, like our graduates at The Training Collaborative, to imagine a wide range of ideas, taking a good idea, and for far less than you’d expect, create options that enhance the quality of life for people supported. The purpose of this session is to share some cool ideas and how you can implement a good idea for \$5 or less

*[Intended Audience: Administrators/Directors, Emerging Leaders, General]*

## 2:45 p.m. to 4:00 p.m. - CONCURRENT SESSIONS



### TECHNOLOGY FOR A LESS COMPLEX WORLD ..... High Rock

Jody W. Baldwin, Branch Manager, Envisia

**SPONSORED BY THE CENTER FOR DISCOVERY**

A key ingredient to improving the quality of life for those facing complex challenges, is first understanding what technologies available today are best used in these areas. It is critical to find practical innovation with a focused purpose that can advance environmental quality for those in need via the latest technological developments. In order to choose the most applicable technological advancements, it is important to identify the various natural and artificial ecosystems and the physical challenges they face. This includes all inhabitants, including those with complex intellectual and developmental needs. Once identified, it is imperative to protect and respect the interaction that people of all ability levels will have in technology-rich environments. This can be facilitated by recognizing measurable results in the mechanical, electrical, energy sustainable, automation and integration industries.

*[Intended Audience: Assistive Technology, Clinicians, Consumers, Family Members, Residential, Purchasing] CEU*

### The Conference Staff would like to thank the following individuals who assisted in planning the program.

*Diane Baehre, Empower  
Cora Baliff, CP of NYS Board of Directors  
Carole Berg, Able 2  
Jacqueline Conley, ADAPT Community Network  
Jennifer Cornish, Able 2  
Patty Craig, Center for Disability Services  
Josie Davide, Queens Centers for Progress  
Eric DesSoye, Empower  
Cristine Donovan, Racker  
Tom Gillespie, Center for Disability Services  
Maureen Goshea, CP of Ulster County  
Janine Klein, UCP of Long Island  
Rosemary Lorello, Center for Disability Services*

*Theresa Manuel, CP Unlimited  
Marianne McBride, ADAPT Community Network  
Terrie Meyn, Happiness House/CP Rochester  
Ellen Naidus, Cerebral Palsy of Long Island  
Lucy Rizzo, Upstate Cerebral Palsy  
Stephanie Russo, CP of Westchester  
Barbara Scherr, CP of NYS Board of Directors  
Cheryl Smith, HCA  
Maria Torgalski, Aspire of WNY  
Diane Weiermann, AccessCNY  
Tina Weisman, CP of Westchester  
Ed Weiss, Queens Centers for Progress Services*

If you need assistance or have any questions, please stop by the CP of NYS Registration Desk area.

## ANNUAL AWARDS BANQUET

5:30 p.m. to 6:30 p.m. - Cocktail Reception - Gallery

6:30 p.m. to 9:00 p.m. - Awards Dinner - City Center

**Sponsored by: IRWIN SIEGEL AGENCY, INC.**

---

### ***Congratulations to all our Award winners!!***

Paul Tudisco (ADAPT Community Network) ..... *Al Felmet Achievement Award*

Dr. Joseph Dutkowsky (CP of NYS Board of Directors) .. *Anthony J. Koenig Volunteer Service Award*

Stephanie Knaust (Center for Disability Services) ..... *John R. Horvath Award of Distinction*

Jeanne Herbert (Inspire of Orange County) ..... *Daniel Wieder Leadership Award*

Muntezir “Monty” Bhanji / Stop & Shop (Queens CP) ..... *Employer of the Year Award*

Stephen Healy (AccessCNY) ..... *Natalie Rogers Employee of the Year Award*

Pieces of Heart Art Program (Upstate Cerebral Palsy) ..... *Program Innovation Award*

Ernestine Gayle (Empower) ..... *Robert Schonhorn Direct Support Professional of the Year Award*

Norman Biegaj (Olean Lodge #491) ..... *Elks Award*

Otis Armstrong Day Habilitation Program (The Center for Discovery) ... *2019 IMAGINE NY Art Contest Winner*



REGISTRATION ..... Opens at 7:00 a.m.

BREAKFAST - 7:00 to 8:00 a.m. .... City Center

CP MARKETPLACE - 8:00 a.m. to 4:30 p.m. .... City Center Meeting Room 1

IMAGINE NY ART DISPLAY ..... Pavilion

## SPONSORED BY CEREBRAL PALSY OF LONG ISLAND

*You will want to walk through the Pavilion to view artwork created by people with disabilities representing CP of NYS Affiliates. We have again added a display of photographs created by program participants from across the state to this year's art exhibition.*

8:00 a.m. to 9:15 a.m. .... City Center



### TUESDAY BREAKFAST KEYNOTE ADDRESS - THE POWER MINDSET: TRANSFORMING LIFE CHALLENGES INTO EMPOWERING STRATEGIES FOR LIVING OUR BEST LIFE

*Tom J. Bull, Business Life Coach, Speaker, Organizational Culture Consultant, Tom J. Bull Speaking, Life Coaching, and Consulting*

The most powerful tool on our body is the five inches between our ears. Change how we think and we can change the direction of our lives immediately. This is the Power Mindset. Tom provides a comprehensive approach to not merely managing stress and life challenges, but to use them to deepen our personal awareness and enhance the relationships we have with others and ourselves. What do we lean on when we face adversity? What do we give power, authority, focus, and attention in our lives? Being active in this creative process helps us gain what we all desire in life, Awareness, Balance, and Control (The ABC's of Personal Empowerment). This workshop encourages a dialogue of sharing real experiences, while exploring how the strategies and principles presented in this framework address true life challenges. Participants will develop a powerful mindset, learn how to design a supportive environment, employ strategies for remaining calm in chaos, develop techniques to overcome stress and anxiety, and positively enhance the relationships in their lives.

*[Intended Audience: General]*

## 9:30 a.m. to 10:45 a.m. - CONCURRENT SESSIONS

### FUTURE RATE SETTING INITIATIVES AND UPDATES ..... Saratoga 1

*Traci Coleman, Director of Rate Setting and STAC, NYS Education Department*

*Brian Zawistowski, Assistant Director of Rate Setting, NYS Education Department*

The New York State Education Department Rate Setting Unit will provide an update on the current rate setting initiatives under development, and an update on future initiatives under consideration.

*[Intended Audience: Administrators/Directors, Educators, Finance]*

## 9:30 a.m. to 10:45 a.m. - CONCURRENT SESSIONS



### MEDIA & ADVOCACY -

### GETTING MEDIA & POLICY MAKERS' ATTENTION ..... Saratoga 3

David Lombardo, *Reporter, Times Union*

Evan Sullivan, *Vice President, Ostroff Associates, Inc.*

**SPONSORED BY ACCESSNY**



With today's 24-hour news cycle, various media platforms and a constant barrage of fake and real news, it is difficult to cut through to get the attention of legislators and the media on issues of importance to individuals with disabilities, families and providers. Mr. Lombardo and Mr. Sullivan both have a deep background in Albany politics and know what gets legislators' and reporters' attention. They will share their expertise with you in how to move your advocacy forward in the most effective way possible.

*[Intended Audience: Administrators/Directors, Board Members, Consumers, Day Programs/Employment, Direct Support Professionals, Early Childhood Professionals, Educators, Emerging Leaders, Family Members, General, Public Relations, Recreation, Residential]*

### ELECTRONIC VISIT VERIFICATION .....Broadway 1 & 2

Lana Earle, *Director, Division of Long Term Care, NYS DOH*

Timothy Byers, *Project Director, NYS OPWDD*

The 2016 federal 21<sup>st</sup> Century Cures Act mandates that states implement Electronic Visit Verification (EVV) for all Medicaid personal care and home health services that require an in-home visit by a provider. This includes in-home services under the Health Department as well as the Office for People With Developmental Disabilities. States must require EVV use for all Medicaid-funded personal care by January 1, 2020 and home health care by January 1, 2023. If New York doesn't begin EVV for personal care (including OPWDD) by 1-1-20 or request a "good faith effort" delay, the state will begin to lose hundreds of millions in federal Medicaid funding. Ms. Earle and Mr. Byers will provide the latest information on New York's EVV implementation and requirements. They will answer questions including: Has New York State applied for and received a "good faith effort" delay or will our supports and services have to comply by 1-1-20? Which OPWDD programs will require EVV? What exceptions, if any, are there for local Affiliates and agencies? Who will pay for EVV implementation? What does this mean for consumers and families? What does EVV mean for New York? And what exactly do we need to do and by when?

*[Intended Audience: Administrators/Directors, Assistive Technology, Corporate Compliance/QA, Day Programs/Employment, Emerging Leaders, Family Members, Finance, General, Medicaid Service Coordinators]*



### DISABILITY LEAVE MANAGEMENT -

### THE ABC'S OF THE ADA, FMLA AND NYPFL TOO! .....Broadway 3 & 4

Richard D. Landau, *Esq., Shareholder, Jackson Lewis P.C.*

This session will guide HR executives through the mandates on employers (as well as employee burdens) as staff seek time off and/or pay for their own (or family member's) medical reasons and reasonable accommodations. We will emphasize how following a process creates the best results in getting staff back to work, managed out of the workforce if appropriate and defending against claims.

*[Intended Audience: Administrators/Directors, Board Members, Corporate Compliance/QA, Finance, Human Resources, Managers] CEU*

**9:30 a.m. to 10:45 a.m. - CONCURRENT SESSIONS**



**BUILDING YOUR BENCH ..... High Rock**

**Peg Gould**, Director, The Training Collaborative, ADAPT Community Network

**Ed Matthews**, Chief Executive Officer, ADAPT Community Network

**Dahlia Porter**, Senior Vice President, ADAPT Community Network

**SPONSORED BY ADAPT COMMUNITY NETWORK**



Current leaders should strive to build their organizational bench to ensure their agency remains vibrant. This is especially true as many current leaders are retiring. When done effectively, leadership development promotes retention and builds a strong agency culture. This presentation will highlight outcomes and results of what one organization has successfully done in building internal leadership and the roles that current leaders played in the process.

*[Intended Audience: Administrators/Directors, Emerging Leaders, Managers]*

**AN UPDATE ON TELEMEDICINE IN NYS ..... Alabama/Travers**

**Megan Prokorym**, NYS DOH

**Jonathan Lang**, NYS DOH

**Virginia Scott-Adams**, NYS OPWDD

**Margaret Vijayan**, NYS OPWDD

NYS OPWDD will provide an update on their telemedicine guidance, while NYS DOH will provide an overview of NYS telehealth parity law and will summarize and provide guidance on interagency telehealth regulation and policy.

*[Intended Audience: Administrators/Directors, Clinicians, Corporate Compliance/QA, Finance, Human Resources, Physicians]*

**MARKET**  
**place**  
**p**

**BEVERAGE BREAKS FOR TUESDAY**  
**WILL BE IN THE CP MARKETPLACE IN THE CITY CENTER.**  
***Grab a beverage and visit the vendors!***

**10:45 a.m. to 11:15 a.m.**

**&**

**3:00 p.m. to 3:30 p.m.**

## 11:15 a.m. to 12:30 p.m. - CONCURRENT SESSIONS

### **COMMON ERRORS ON SED CFR SUBMISSIONS ..... Saratoga 1**

**Brian Zawistowski**, *Assistant Director, OMS Rate Setting Unit, NYS Education Department*

**Jennifer Finucan**, *Assistant Accountant, OMS Rate Setting Unit, NYS Education Department*

The New York State Education Department Rate Setting Unit will provide a presentation on common CFR reporting errors and other issues encountered by RSU staff. RSU will provide suggestions and welcome any suggestions from attendees on how to improve processing of cost reports.

*[Intended Audience: Administrators/Directors, Educators, Finance]*



### **CRISIS COMMUNICATIONS: ALWAYS BE PREPARED ..... Saratoga 3**

**Susan Bardack**, *CEO, Buzz Media Solutions*

Crisis situations happen to all organizations, big and small, somewhere along the way. However, both leaders and team members can be completely prepared for anything that happens through advance work and preparation. Developing a crisis communications plan, working through a variety of scenarios and developing processes are ways to be ready to step in action should any challenging situation occur. Organizations can also learn from the way other companies and non-profits have handled situations and can incorporate those ideas into their own crisis strategy.

*[Intended Audience: Administrators/Directors, Direct Support Professionals, Managers, Public Relations]*



### **ALTERNATIVE ACCESS METHODS ..... Broadway 1 & 2**

**Linda M. Cole**, *Speech-Language Pathologist, Cerebral Palsy of Long Island*

This presentation will provide an overview of important considerations that must be taken into account when professionals are determining the most appropriate access method for individuals with complex communication needs. Direct selection and in-direct selection methods will be covered. Equipment from the Cerebral Palsy of Long Island "Augmentative and Alternative Communication Lab" will be available for demonstration of various access methods as well as some software features that support consistent, easy and efficient access.

*[Intended Audience: Clinicians] CEU*

## 11:15 a.m. to 12:30 p.m. - CONCURRENT SESSIONS



### IS THE WITNESS LYING? - DETERMINING CREDIBILITY DURING INTERNAL INVESTIGATIONS .....Broadway 3 & 4

Richard D. Landau, Esq., Shareholder, Jackson Lewis P.C.

In any investigation, ultimately the Agency must decide who it believes and why. This session will explore effective tools for assessing the credibility of the alleged victim, witnesses and alleged bad actor so it can confidently reach (and defend) organizational conclusions.

*[Intended Audience: Administrators/Directors, Corporate Compliance/QA, Finance, Human Resources] CEU*

### TOOLS OF THE TRAIID ..... High Rock

David Selover, National Mobility & Seating

An exploration of new and unique assistive technology equipment available at the TRAIID Centers in New York State. During this presentation we will explore some of the newest devices available and you will have an opportunity to have a hands-on use of these devices as time allows.

*[Intended Audience: Assistive Technology, Clinicians, Direct Support Professionals, Families, Physicians] CEU*



### AN UPDATE ON THE TELEMEDICINE PROJECTS ..... Alabama/Travers

Matthew Kaufman, MD, Chief Executive Officer, StationMD  
 Meghan Calichman, Chief Operating Officer, StationMD  
 Bonnie Sloma, Senior Vice President, People Inc.  
 Annette Phillips, Associate Vice President Clinical Practice, People Inc.

**SPONSORED BY ABLE2 & CP ASSOCIATION OF THE NORTH COUNTRY**



This session will provide a discussion of two current telehealth projects in New York State. Both projects focus on reducing ER and hospital visits, but with different approaches.

*[Intended Audience: Administrators/Directors, Clinicians, Corporate Compliance/QA, Finance, Human Resources, Physicians]*



## LUNCH

12:30 p.m. to 1:30 p.m. ♦ CITY CENTER

---

## CHAIR MASSAGES!

Noon to 4:00 p.m.



Take time for yourself  
... De-stress ... Relax!!!!

MARKET  
place  
p

---



## PHOTO BOOTH FUN!!!!

By O Snap Photo-Booths

*Sponsored by Focused Wealth Management*



**Grab your friends and head to**  
**THE GALLERY**  
**Tuesday, October 29**  
**5:00 p.m. - 10:00 p.m.**  
**Before & After the**  
**Staff Recognition Awards**



## 1:45 p.m. to 3:00 p.m. - CONCURRENT SESSIONS

### OPWDD SURVEY TRENDS..... Saratoga 1

**Leslie Fuld**, Deputy Commissioner, Division of Quality Improvement, NYS OPWDD

This session will focus on the most recent trends in agency surveys by OPWDD.

*[Intended Audience: Administrators/Directors, Corporate Compliance/QA, Human Resources]*



### MEDICAID MANAGED LONG TERM CARE CONSUMER ADVOCACY - HOW ICAN CAN ASSIST YOU! ..... Saratoga 2

**David Silva**, Program Director, ICAN, Community Service Society

This presentation is an introduction to ICAN, New York State's ombuds program for people with Medicaid who need to get long term care or behavioral health services through managed care plans. In addition, an overview will be provided of the different types of plan through which people can obtain long term care services, how to enroll, what services are covered, and how to work with plans to get needed care.

*[Intended Audience: Administrators/Directors, Board Members, Consumers, Corporate Compliance/QA, Emerging Leaders, Family Members, Finance, General, Intake Coordinators, Medicaid Service Coordinators, Public Relations]*



### BIOMECHANICS OF SEATING & MOBILITY .....Broadway 1 & 2

**Sharon O'Brien**, MS, OTR/L, PTA, ATP, Cerebral Palsy of Long Island

This workshop will provide an overview on the biomechanics as it relates to seating and mobility, looking holistically on how tone, orthopedic deformities and gravity all play a role in an individual's seated posture and overall function during mobility related activities of daily living (MRADLs).

*[Intended Audience: Clinicians] CEU*



### INCLUSIVE U: COLLEGE OPPORTUNITIES FOR STUDENTS WITH INTELLECTUAL AND DEVELOPMENTAL DISABILITIES ..... Broadway 3 & 4

**Beth Myers**, Ed.D., Executive Director, The Taishoff Center, Syracuse University

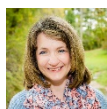
**Rob Myers**, Executive Director, The Kelberman Center



This interactive presentation addresses the emerging field of inclusive higher education. This session includes a brief introduction to Transition and Postsecondary Programs for Students with Intellectual Disabilities across the US and program development focused in New York State. An overview of the InclusiveU program at Syracuse University will be provided. The presenter will provide emerging research on program development, academic supports, representation and advocacy, career development, and outcome measurement in inclusive higher education.

*[Intended Audience: Early Childhood Professionals, Educators, Family Members, Clinicians, Day Programs/Employment]*

## 1:45 p.m. to 3:00 p.m. - CONCURRENT SESSIONS



### HEALTHY RELATIONSHIPS & SEXUALITY ..... High Rock

Kathy O'Connell, Director, Radiant Abilities, LLC

**SPONSORED BY UPSTATE CEREBRAL PALSY**

This is a powerful presentation for adults and teens with disabilities, as well as the families and professionals who support them. In order for people to have rich and full lives, a healthy sense of relationships and sexuality has to be part of it. What does not get addressed enough in the conversation about relationships and sexuality is the social and emotional issues that disability brings to the topic. In this presentation, you will be engaged in discussions about:

- The societal myths about sexuality and disability and how these false beliefs can be disempowering for developing a sense of sexuality
- The concept of body images and shame impacted by disability, as well as how to heal from shame and create a more positive body image
- How to effectively counter Sexual Ableism
- How releasing negative stereotypes helps one to embrace healthy sexuality and Power to Attract loving relationships

*[Intended Audience: Board Members, Clinicians, Consumers, Direct Support Professionals, Educators, Emerging Leaders, Family Members, General, Intake Coordinators, Managers, Medicaid Service Coordinators, Recreation, Residential] CEU*



### ALZHEIMER'S AND DEMENTIA IN INDIVIDUALS WITH I/DD ..... Alabama/Travers

Erica Salamida, Director of Education and Outreach, Alzheimer's Association of Northeastern New York

This course is designed to increase access to dementia-capable care for individuals with intellectual and developmental disabilities. Topics covered will include: understanding Alzheimer's and dementia including warning signs and causes, recognizing changes that manifest in individuals with intellectual and developmental disabilities with the onset of dementia, best practices in assessment and exploring communication strategies.

*[Intended Audience: Clinicians, Consumers, Direct Support Professionals, Family, General] CEU*



**BEVERAGE BREAKS FOR TUESDAY  
WILL BE IN THE CP MARKETPLACE IN THE CITY CENTER.  
*Grab a beverage and visit the vendors!***

**10:45 a.m. to 11:15 a.m.  
&  
3:00 p.m. to 3:30 p.m.**



**3:30 p.m. to 4:45 p.m. - CONCURRENT SESSIONS**



**TOP 20 COMPLIANCE MISTAKES ..... Saratoga 1**

*Melissa Sambri, Esq., Partner, Barclay Damon, LLP*

The presenter will discuss the top 20 compliance issues that have arisen in the last year for developmental disability providers.

*[Intended Audience: Administrators/Directors, Corporate Compliance/QA, Finance, Human Resources] CEU*



**SELECTING AN APPROPRIATE SEATING SYSTEM .....Broadway 1 & 2**

*Sharon O'Brien, MS, OTR/L, PTA, ATP, Cerebral Palsy of Long Island*

This course will provide an overview on:

- Identifying common postural asymmetries and relevant interventions for correction or accommodation,
- Discuss various equipment types and clinical decision making involved in equipment selection, and
- Medically justifying rehab and custom equipment.

*[Intended Audience: Clinicians] CEU*



**STRESSED INSIDE-OUT: MANAGING CAREGIVER STRESS .....High Rock**

*Johanna Lantz, Ph.D., Chief of Psychology, The Center for Discovery*

*Keith Rico, Assistant Chief of Program Development, The Center for Discovery*

*Rebecca Erson, Music Therapist, The Center for Discovery*



Caring for people with developmental disabilities can be both rewarding and stressful. Stress can have detrimental effects on your physical and psychological health. The presenters will describe these impacts and will provide practical strategies to reduce stress in your life and those for whom you care. Audience members will have the opportunity to participate in a short sound healing therapy session. The presenters will also share research conducted at The Center for Discovery on the use of physiological sensors to monitor caregiver and student stress in classroom settings.

*[Intended Audience: Clinicians, Direct Support Professionals, Physicians] CEU*

---

**3:30 p.m. to 4:45 p.m. - CONCURRENT SESSIONS**

**INTEGRATION OF OMH/OPWDD SERVICES FOR  
Dually Diagnosed ..... Alabama/Travers**

*Moira Tashjian, Associate Commissioner, Adult Community Care, NYS OMH*

*Jill Pettinger, Assistant Commissioner, NYS OPWDD*

As the number of individuals with developmental disabilities and a mental health diagnosis increase, there is a need to ensure that the NYS agencies responsible for these services work collaboratively. Moira Tashjian from OMH and Jill Pettinger from OPWDD will discuss the work the agencies are doing to ensure that people with dual diagnoses (IDD and MH) receive the services they need.

*[Intended Audience: Administrator/Directors, Clinicians, Physicians, Managers, Family]*

## **Staff Recognition Awards Program**

---

**Reception/Dinner - 5:30 p.m. to 8:30 p.m. - City Center**

---

### **Electronic Conference Journal**

CP of NYS will produce a Conference Journal to highlight the sponsors and supporters of our Annual Conference. This year we are again producing an electronic version of the publication which will be available on our Conference web page at **conference.cpstate.org**.

**Many thanks to our sponsors!!**

---

**Breakfast Service Begins - 7:30 a.m.**  
**SARATOGA 1&2**

---



## **EVALUATIONS ARE IMPORTANT TO US!**

Thanks to each of you who took the time to fill out evaluation forms last year. Your responses helped in the planning of this year's Conference. Please remember to complete your overall evaluation again this year.

### **AVAILABLE ONLINE!**

For your convenience, our overall evaluation can be completed online as well! Go to the following link to take this quick, anonymous evaluation. **Thank you!**

**[conference.cpstate.org/conference-details/evaluations/](http://conference.cpstate.org/conference-details/evaluations/)**

## INSTRUCTIONS FOR CONTINUING EDUCATION UNITS (CEUs)

CP of NYS has arranged with Hudson Valley Community College (HVCC) to award Continuing Education Units (CEUs) for the following workshop sessions. All Conference participants wishing to earn CEUs for any of these workshops are required to check in at the main Conference Registration Table and **PAY A ONE-TIME PROCESSING FEE OF \$20 (checks payable to CP of NYS) and PROVIDE YOUR MAILING ADDRESS AND DATE OF BIRTH.** This fee will cover the cost of mailing your certificate and maintaining your CEUs in the Hudson Valley Community College database. Participants are also required to **SIGN IN AT EACH OF THE WORKSHOP SESSIONS.** HVCC will mail Certificates of Completion directly to each participant.

- ❖ **TECHNOLOGY FOR A LESS COMPLEX WORLD**, presented by Jody W. Baldwin - Monday, October 28, 2:45 p.m. to 4:00 p.m.
- ❖ **DISABILITY LEAVE MANAGEMENT - THE ABC'S OF THE ADA, FMLA AND NYPFL TOO!**, presented by Richard D. Landau, Esq. - Tuesday, October 29, 9:30 a.m. to 10:45 a.m.
- ❖ **ALTERNATIVE ACCESS METHODS**, presented by Linda M. Cole - Tuesday, October 29, 11:15 a.m. to 12:30 p.m.
- ❖ **IS THE WITNESS LYING? - DETERMINING CREDIBILITY DURING INTERNAL INVESTIGATIONS**, presented by Richard D. Landau, Esq. - Tuesday, October 29, 11:15 a.m. to 12:30 p.m.
- ❖ **TOOLS OF THE TRAIT**, presented by David Selover - Tuesday, October 29, 11:15 a.m. to 12:30 p.m.
- ❖ **BIOMECHANICS OF SEATING & MOBILITY**, presented by Sharon O'Brien - Tuesday, October 29, 1:45 p.m. to 3:00 p.m.
- ❖ **HEALTHY RELATIONSHIPS & SEXUALITY**, presented by Kathy O'Connell - Tuesday, October 29, 1:45 p.m. to 3:00 p.m.
- ❖ **ALZHEIMER'S AND DEMENTIA IN INDIVIDUALS WITH I/DD**, presented by Erica Salamida - Tuesday, October 29, 1:45 p.m. to 3:00 p.m.
- ❖ **TOP 20 COMPLIANCE MISTAKES**, presented by Melissa Zambri - Tuesday, October 29, 3:30 p.m. to 4:45 p.m.
- ❖ **SELECTING AN APPROPRIATE SEATING SYSTEM**, presented by Sharon O'Brien - Tuesday, October 29, 3:30 p.m. to 4:45 p.m.
- ❖ **STRESSED INSIDE-OUT: MANAGING CAREGIVER STRESS**, presented by Johanna Lantz, Keith Rico, Rebecca Erson - Tuesday, October 29, 3:30 p.m. to 4:45 p.m.

**Tuesday, October 29**  
**8:00 a.m. to 4:30 p.m.**  
**Saratoga City Center**

Be sure to stop by the CP Marketplace in the City Center on Tuesday, October 29 to enjoy your beverage breaks and visit with the vendors throughout the day - browse, shop and learn! The CP Marketplace is where Affiliates will be displaying products and highlighting programs they have developed that help raise funds and/or provide work experience for people you support.

**Center Commercial Services – Center for Disability Services**

*The Center for Disability Services will present their document solutions including commercial printing, scanning and mailing services, as well as information regarding their service provider programs.*

**CP of the North Country**

*CP of the North Country will provide live demonstrations and multimedia presentations centered around their outdoor recreational program activities.*

**The Center for Discovery**

*The Center for Discovery will feature items highlighting their Day Habilitation Program, overall programming philosophy, as well as offering handmade items for sale.*

**The Root Farm/Art Program – Upstate CP**

***The Root Farm** is focused on learning and healing for people of all ages and abilities through the power of equine, agricultural and recreational experiences. The Root Farm will highlight its agricultural programs with various products produced at The Farm, including honey and syrup, and will showcase various recreational programs including the Action Trackchair and The Root Farm's new challenge course, including one of the first fully accessible high ropes courses in the country. Upstate CP will also feature paintings, pottery (bowls), sculptures and silk scarves from their successful art/artisan programming. The artistic process will also be presented in a short video.*

CP of NYS would like to thank the 2019 Exhibitors for their enthusiastic support.

**Abou Dewan &  
Hanna Co. Inc.**

*901 Erie Avenue, North Tonawanda, NY 14120  
(716) 743-0388 – Attn: Judith Hanna*

Linens, beddings, housewares, window treatments,  
kitchenware

**ADP**

*445 Electronics Parkway, Liverpool, NY 13088  
(315) 882-5449 – Attn: Tina Malara*

Providing payroll services, human resources  
management, employee benefits administration, talent  
management, tax compliance, PEO and BPO solutions  
for any size employer.

**BDO USA LLP**

*622 Third Avenue, 31<sup>st</sup> Floor, New York, NY 10017  
(212) 885-7403 – Attn: Rob McCormick*

Advisory, Audit & Insurance, Consulting, Tax  
Services

**eVero Corporation**

*48 S. Service Road, Suite 200, Melville, NY 11747  
(516) 750-4485 – Attn: Jeannine Azan*

Digital Agency – Case Management

**Focused Wealth  
Management**

*216 Route 299, Highland, NY 12528  
(845) 691-4035 – Attn: Ruby Gill*

Provider of Retirement Plan Services to the  
Not-for-Profit Industry

**Irwin Siegel Agency, Inc.**

*25 Lake Louise Marie Road, Rock Hill, NY 12775  
800-622-8272, Ext. 8171 – Attn: Deija Davis-Montes*

Custom insurance for programs to meet the  
unique needs of agencies providing support to  
people with developmental disabilities.

**Litmitless Stylus**

*270 77<sup>th</sup> Street, Brooklyn, NY 11204  
(347) 310-4405, Ext. 8011 – Attn: Paul Tudisco*

An adaptive stylus to assist with hand mobility.

**Medisked**

*850 University Avenue, Rochester, NY 14607  
(866) 633-4753 – Attn: Linda Nakagawa*

Solutions support providers, state and county  
oversight agencies, care coordination entities, and  
payers to use data to reduce costs and improve care.

**Millin Associates**

*303 Merrick Road, Lynbrook, NY 11563  
(516) 374-4530, Ext. 5948 – Attn: Nicholas Jerolimov*

Managed care billing and RCM software.

**NY ABLE  
(Office of the NYS Comptroller)**

*110 State Street, Albany, NY 12208  
(518) 473-0380 – Attn: Jenna McClosky*

Tax-advantaged savings program for  
people with disabilities.

**NYSID**

*11 Columbia Circle Drive, Albany, NY 12203  
(518) 694-0225 – Attn: Jennifer Lawrence*

Purchasing that powers employment.

**Therap Services**

*562 Watertown Avenue, Suite 3, Waterbury, CT 06708  
(518) 491-0960 – Attn: Karen Niedermeier*

Secure, web-based documentation and reporting software for I/DD industry

**PrecisionCare Software**

*243 Main Street, Suite 270, New Paltz, NY 12561  
(845) 255-6097, Ext. 214 – Attn: Jacquie Mastropietro*

Offers a complete EHR software solution of streamlined documentation and compliance protection to the Human Services community.

**Total Care, RX  
(World's Fair Pharmacy)**

*57-37 Main Street, Flushing, NY 11355  
(718) 407-3722 – Attn: Thomas Michael*

Pharmacy Services for LTC

**StationMD**

*515 Valley Street #203, Maplewood, NJ 07040  
(908) 663-2929 – Attn: Ariana Anderson*

Telehealth services

**Votacall, Inc.**

*1504 Providence Highway #19, Norwood, MA 02062  
(781) 693-0634 – Attn: Andrew Jellison*

Telecommunications/Cloud Based Solutions



**BEVERAGE BREAKS FOR TUESDAY  
WILL BE IN THE CP MARKETPLACE IN THE CITY CENTER.**

***Stop by and visit our vendors!***

**10:45 a.m. to 11:15 a.m.**

**&**

**3:00 p.m. to 3:30 p.m.**



**Able2**

P.O. Box 1554  
Elmira, NY 14902  
(607) 734-7107

**AccessCNY**

1603 Court Street  
Syracuse, NY 13208  
(315) 455-7591

**ADAPT Community Network**

80 Maiden Lane, 8<sup>th</sup> Floor  
New York, NY 10038-4811  
(212) 683-6700

**Aspire of WNY**

2356 North Forest Road  
Getzville, NY 14068  
(716) 505-5500

**Center for Disability Services**

314 South Manning Boulevard  
Albany, NY 12208  
(518) 437-5700

**Cerebral Palsy of Long Island**

380 Washington Avenue  
Roosevelt, NY 11575  
(516) 378-2000

**CP of the North Country**

4 Commerce Lane  
Canton, NY 13617  
(315) 386-1156

**Cerebral Palsy of Ulster County**

P.O. Box 1488  
Kingston, NY 12402  
(845) 336-7235

**Cerebral Palsy of Westchester**

1186 King Street  
Rye Brook, NY 10573  
(914) 937-3800

**Constructive Partnerships  
Unlimited (CP Unlimited)**

40 Rector Street, 15<sup>th</sup> Fl.  
New York, NY 10006  
(212) 947-5770

**CP Unlimited**

**Hudson Valley Division**  
15 Mt. Ebo Rd. S  
Brewster, NY 10509  
(845) 878-9078

**CP Rochester**

3399 Winton Road South  
Rochester, NY 14623  
(585) 334-6000

**E. John Gavras Center**

182 North Street  
Auburn, NY 13021  
(315) 255-2746

**Empower**

9812 Lockport Road  
Niagara Falls, NY 14304  
(716) 297-0798

**HCA**

18 Broad Street  
Johnson City, NY 13790  
(607) 798-7117

**Happiness House**

731 Pre-Emption Road  
Geneva, NY 14456  
(315) 789-6828

**Hudson Valley Cerebral Palsy  
Association**

40 Jon Barrett Road  
Patterson, NY 12563  
(845) 878-9078

**Inspire**

2 Fletcher Street  
Goshen, NY 10924  
(845) 294-8806

**Jawonio Inc**

260 North Little Tor Road  
New City, NY 10956  
(845) 708-2000

**Prospect Center of CFDS**

133 Aviation Road  
Queensbury, NY 12804  
(518) 798-0170

**Queens Centers for Progress**

81-15 164th Street  
Jamaica, NY 11432  
(718) 380-3000

**Racker**

3226 Wilkins Road  
Ithaca, NY 14850  
(607) 272-5891

**The Center for Discovery**

Box 840, Benmosche Road  
Harris, NY 12742  
(845) 794-1400

**UCP of Long Island**

250 Marcus Boulevard  
Hauppauge, NY 11788-2018  
(631) 232-0011

**Upstate Cerebral Palsy**

1020 Mary Street  
Utica, NY 13501  
(315) 724-6907

**Cerebral Palsy Assns. of NYS  
Affiliate Services Office**

3 Cedar Street Ext., Suite 2  
Cohoes, NY 12047  
(518) 436-0178